



KING TONY

PROFESSIONAL TOOLS

**CHECK OUT
THIS SEASONS
LATEST AND
GREATEST
INSIDE >>**

NEW!

278 PCE TOOL SET

KT919-280CRV-BK

\$4250.00
excl

\$4887.50 incl gst



FREE

BONUS ITEMS!

**SEE INSIDE FOR
MORE DETAILS!!!**

SUMMER ²¹/₂₂ >

Offers only available at participating KING TONY dealers / wholesale merchants

Prices offered valid for period of promotion only 15th November 2021 until 15th January 2022. Prices exclude GST.



KING TONY

NEW!

KING TONY 278 PCE TOOL SET

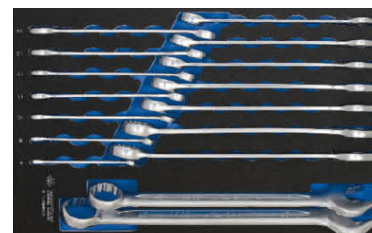
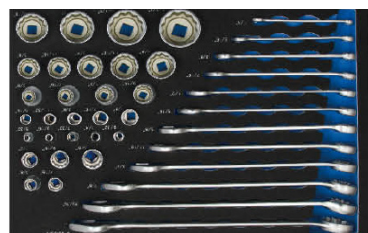
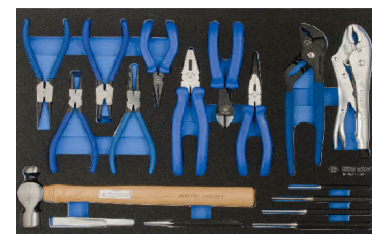
KT919-280CRV-BK

\$4250.00 excl

\$4887.50 incl gst

CONTAINS:

- » KT9-9003MRV - 103 PCE 1/2", 3/8", 1/4" Dr. Socket Set 12pt in EVA Foam. Metric
- » KT9-31912MRV - 12 PCE Screwdriver Set in EVA Foam
- » KT9-90217GRV - 17 PCE Pliers & Hammer Set in EVA Foam
- » KT9-91190CRV - 90 PCE Stubby Wrench & Hex Key Set in EVA foam. Metric
- » KT9-1216MRV05 - 16 PCE Combination Wrench Set in EVA Foam
- » KT9-9040SRV - 40 PCE 1/2", 3/8", 1/4" DR. (Imperial) Socket 12pt & Wrench Set. Eva



BONUS ERGODYNE PACK

ERGODYNE BANDANA COOLING EVAP BLUE,
SQWINCHER (50 X 3GRAM) QWIK STIKS LEMON
LIME (PKT), ERGODYNE PROFLEX 230LTR
LEATHER KNEE PADS WIDE SOFT
CAP BROWN

FREE

BONUS ITEM RRP \$269.00



» 35KG CAPACITY PER DRAW

» TOP CHEST LID WITH HYDRAULIC BARS

» FLAT SIDE PANEL



KING TONY WORKSTATION 2275MM WIDE, BLUE, WOOD TOP



KT87D11X05A-KB

\$2492.86 excl

\$2866.79 incl gst

2275 X 460 X 2000

- » KT87D11-18A-KB - King Tony 2 Door Lockable Tall Cabinet
- » 5 Flexible Adjustment Shelves - 915 x 460 x 2000mm
- » KT87D11-01A-KB - King Tony Wall Cabinet - Hydraulic Spring 680 X 280 X 350mm
- » KT87D11-17A-KB - King Tony Wall Cabinet - Roller Door 680 X 280 X 350mm
- » KT87D11-09A - Pressed Wooden Board Bench Top
- » KT87D11-03A-KB - King Tony 2 Door Lockable Open Door Floor Cabinet
- » KT87D11-05A-KB - King Tony 5 Drawer, Lockable Drawer Floor Cabinet - Ball Bearing Sliders
- » KT87D11-06A-B - Steel Back Panelling For Tool Storage x2

BONUS SP-607 TV SOUNDBAR

- » Output Power: 40W

FREE

BONUS ITEM RRP \$297.55



KING TONY WORKSTATION 2640MM WIDE, BLUE, WOOD TOP



KT87D11X04A-KB

\$3357.14 excl

\$3860.71 incl gst

2640 X 460 X 2000

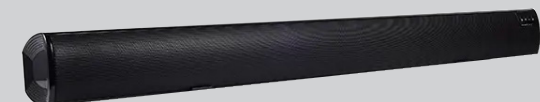
- » KT87D11-02A-KB - King Tony 1 Door Lockable Tall Cabinet, 5 Flexible Adjustment Shelves 600 x 460 x 2000mm
- » KT87D11-01A-KB - King Tony Wall Cabinet x 2 - Hydraulic Spring 680 x 280 x 350mm
- » KT87D11-17A-KB - King Tony Wall Cabinet - Roller Door 680 x 280 x 350mm
- » KT87D11-09A - Pressed Wooden Board Bench Top
- » KT87D11-03A-KB - King Tony 2 Door Lockable Open Door Floor Cabinet
- » KT87D11-12A-KB - King Tony 5 Drawer Lockable Roll Cabinet ball bearing sliders -650 x 460 x 862
- » KT87D11-05A-KB - King Tony 5 Drawer, Lockable Drawer Floor Cabinet - Ball Bearing Sliders
- » KT87D11-06A-B - Steel Back Panelling For Tool Storage X3

BONUS SP-607 TV SOUNDBAR

- » Output Power: 40W

FREE

BONUS ITEM RRP \$297.55





KING TONY



KING TONY 219 PCE TOOL SET 6 DRAW (RED)

- » KT87411-6B - 6 Drawer Tool Box
- » KT9-7069CR - 69 PCE 3/8" & 1/2" Drives Socket Set
- » KT9-42114GP - 4 PCE Circlip Plier Set
- » KT9-40102GP - 2 PCE Plier Set
- » KT9-2548CR - 48 PCE 1/4" Drive Socket Set
- » KT9-90128SR - 28 PCE Wrenches, Punches, Chisels & Ball Pein Hammer
- » KT9-90138CR - 38 PCE Wrenches
- » KT9-90129CR - 29 PCE Screwdrivers, Pliers & Hex Key Sets
- » KT7911-12 - Hacksaw

KT911-000CR

\$1300.00
excl

\$1495.00 incl gst

**BONUS 12438 ERGODYNE CHILL-ITS 6602
EVAPORATIVE COOLING TOWEL GREY,
18232 LEATHER KNEE PADS WIDE SOFT CAP
BROWN**



FREE

BONUS ITEM RRP \$203.04

KING TONY 4 DRAW TOOL CHEST WITH SS TRIM



- » Tool Box 4 Drawer
- » Top Box
- » Stainless Steel Trim

KT87B52-4BSA

\$535.71
excl

\$616.07 incl gst

KING TONY 7 DRAW ROLL CAB WITH SS TRIM



- » 7 Draws
- » Stainless Steel Trim
- » Tool/ Part Trays
- » Locking Mechanism
- » Stainless Steel Work Bench

KT87B34-7BSA

\$992.86
excl

\$1141.79

KING TONY 15 PCE 1/4" DRIVE BIT & MINI RATCHET SET



1/4" DRIVE BIT & MINI RATCHET SET 5° GEAR ACTION
(72 TEETH) TWO TEETH PAWL ACTION
CONTAINS:

- » KT2335M SERIES - 1/4" Drive 6pt Standard Sockets: 5mm, 5.5mm, 6mm, 7mm, 8mm
- » KT1025P SERIES - Phillips Bits: PH1, PH2
- » KT1025T SERIES - Torx Bits: T10, T15, T20
- » KT1025H SERIES - Hex Bits: H3, H4, H5, H6
- » KT276A SERIES - Ratchet

KT2515MR

\$29.14
excl

\$33.51 incl gst

KING TONY PALM RATCHET SCREWDRIVER



- » 48 Teeth
- » With An Internal Soft Structure, It Allows The Operator To Spin Fasteners On And Off In Hard-To-Reach Areas
- » Stubby Grip Fitting The Palm, Good To Use In A Confined Space

KT2746

\$33.51
excl

\$38.54 incl gst

KING TONY 49 PCE SET PALM RATCHET BIT HOLDER



KT1048MR

\$93.09
excl

\$107.05 incl gst

- » 48 Teeth
- » Internal Soft Structure, It Allows The Operator To Spin Fasteners On And Off In Hard-To-Reach Areas
- » Stubby Grip Fitting The Palm, Good To Use In A Confined Space

KING TONY 33 PCE BIT SET WITH NO.2 SQUARE DRIVE BIT



33 PCE. SCREWDRIVER BIT SET. 25MM LONG. PLASTIC CASE SIZE: 120 X 70 X 42MM
CONTAINS:

- » KT1025S SERIES - Slotted Screwdriver Bits: 3mm, 4mm, 5mm, 6mm
- » KT1025P SERIES - Phillips Screwdriver Bits: PH1, PH2 X 2, PH3
- » KT1025Z SERIES - Pozz Screwdriver Bits: PZ1, PZ2 X 2, PZ3
- » KT1025T SERIES - Torx Screwdriver Bits: T10, T15, T20, T25, 527, T30, T40
- » KT1025H SERIES - Hex Screwdriver Bits: 3, 4, 5, 6mm
- » KT1025U SERIES - Tamper Resistant Torx Screwdriver Bits: T10H, T15H, T20H, T25H, T27H, T30H, T40H
- » KT102502R - Square Head Screwdriver Bit No. 2
- » KT7702-25 - Bit Adaptor
- » KT753-63 - Magnetic Bit Holder

KT1032CQ01

\$33.43
excl

\$38.44 incl gst

KING TONY SOFT FACE HAMMER

- » Soft Face Hammer
- » Changeable Head
- » Polyurethane Material



28MM

KT7842-28

\$24.31
excl

\$27.96 incl gst



35MM

KT7842-35

\$31.91
excl

\$36.70 incl gst



45MM

KT7842-45

\$50.16
excl

\$57.68 incl gst



60MM

KT7842-60

\$77.51
excl

\$89.14 incl gst



KING TONY



KING TONY 8 PCE BEARING SPLITTER SET

8 PCE PRESSURE SCREW BEARING SEPARATOR PULLER SET

- » Includes bearing separator & bolts
- » Capacity 75mm-105mm
- » Bolt 5/8" x 18UNF x L 165mm
- » 2 PCE. Main Rod (Hex Bar 19mm x M12 & 1/2" x L 255mm)
- » 2 PCE Extension Rod (Hex Bar 19mm x M12 x L 255mm)
- » 1 PCE Beam (Carbon Steel)
- » 1 PCE Central Bolt (Hex 21mm x M18 x L292 mm)
- » 1 PCE Nut (Carbon Steel)

KT9BA22

\$224.77 excl

\$258.49 incl gst

BONUS 12438 ERGODYNE CHILL-ITS 6602 EVAPORATIVE COOLING TOWEL GREY

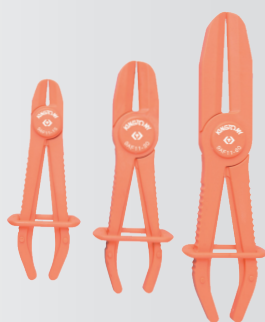


FREE

BONUS ITEM RRP \$62.64

KING TONY 3 PCE HOSE PINCH SET

- » Adjustable Edges Ensure No Damage To Hose
- » For Hoses From 15-60mm
- » Suitable For Clamping Radiator, Heater, Fuel, Coolant And Brake Hoses



KT9AF113

\$21.85 incl gst

\$19.00 excl

KING TONY 2 PCE 2W+5W FOLDABLE LAMP SET



- » 2W COB + 1W LED
- » White Light Color, Kelvin: 6500K
- » Switch Model
- » Top Light: 30 Lumen (lm) / 4 Hours
- » Main Light Low / High – 100 / 200 Lumen (lm) – 3 / 1.5 Hours
- » 180° Swivelling Rotating + 360° Rotating Head, Magnetic Clip & Base
- » Rechargeable Battery : 3.7V 800mAh Li-ion
- » LED Battery Status & Charging Indicator
- » Charging Time : 1.5 Hours

KTP9TA0212D

\$120.06 excl

\$138.07 incl gst

KING TONY DIGITAL TYRE GAUGE

- » Tyre Pressure Gauge Unit Range: 0-100 psi/0-7.0 bar/0-700 kpa
- » Tyre Pressure Gauge
- » Display Resolution: 0.1 psi/0.01 bar/0.01 kpa
- » Tread Depth Gauge Unit Range: 0.22mm/0.8"
- » Tread Depth Gauge Display Resolution: 0.01mm/0.01"
- » Tread Depth Gauge Accuracy: +/-1%



KT9BM120

\$34.96 excl

\$40.20 incl gst

KING TONY 3 JAW GEAR PULLER 3"

GEAR PULLER

- » Three-Jaw
- » Material: Chrome Vanadium Alloy Steel
- » Finishing: Chrome Plated & Phosphate Sunk
- » Size: 3"



KT7963-03

\$57.68 incl gst

\$50.16 excl

KING TONY 3 JAW GEAR PULLER 4"

GEAR PULLER

- » Three-Jaw
- » Material: Chrome Vanadium Alloy Steel
- » Finishing: Chrome Plated & Phosphate Sunk
- » Size: 4"



KT7963-04

\$76.90 incl gst

\$66.87 excl

KING TONY 3 JAW GEAR PULLER 6"

GEAR PULLER

- » Three-Jaw
- » Material: Chrome Vanadium Alloy Steel
- » Finishing: Chrome Plated & Phosphate Sunk
- » Size: 6"



KT7963-06

\$110.10 incl gst

\$95.74 excl

KING TONY 40" PLASTIC CREEPER

- » Designed With 2 Side Storage Trays, For Easy Pick Up Of Small Parts Or Tools. vinyl-Covered Foam Pad Brings More Comfort While Working
- » 280 Lb. Weight Capacity
- » 1-1/4" Ground Clearance



KT87C23-B

\$98.79
excl

\$113.60 incl gst

BONUS 12438 ERGODYNE CHILL-ITS 6602 EVAPORATIVE COOLING TOWEL GREY



FREE

BONUS ITEM RRP \$62.64

KING TONY ROLLING HEAD PRY BARS



6"

KT9TK306

\$20.39
excl

\$23.44 incl gst

12"

KT9TK312

\$29.64
excl

\$34.09 incl gst

16"

KT9TK316

\$40.76
excl

\$46.87 incl gst

20"

KT9TK320

\$55.59
excl

\$63.92 incl gst

- » Lady Foot Rolling Head Pry Bar
- » Curved End Ensures Better Leverage In Small Areas
- » Tapered Point End For Alignment Work



KING TONY 5 PCE RATCHET CRIMPING SET

- » Ratchet Crimping Tool For Pin Terminal, Insulated, Non-Insulated
- » 5 PCE Interchangeable Jaw Dies
- » Pin Terminal 0.5 to 4mm2 AWG 22 to 12
- » Pin Terminal 6 to 16mm2 AWG 10 to 6
- » Insulated Terminal 0.5 to 6mm2 AWG 22 to 10
- » Non Insulated Terminal 0.5 to 6mm2 AWG 22 to 10
- » Non Insulated Terminal 1.5 to 10mm2 AWG 16 to 8

KT67G0005

\$180.00
excl

\$207 incl gst

BONUS 12438 ERGODYNE CHILL-ITS 6602 EVAPORATIVE COOLING TOWEL GREY



FREE

BONUS ITEM RRP \$62.64

KING TONY 4 PCE PRY BAR SET



KT9TK014

\$95.74
excl

\$110.10 incl gst

CONTAINS:

- » KT9TK SERIES - Pry Bars: 204 - 608mm



KING TONY

KING TONY 1/4 - 3/8 - 1/2 COMBINATION SOCKET SET 143 PCE (6 PT)

CONTAINS:

- » 1/4 Standard Sockets - 4-10mm
- » 1/4 Torx Socket E4-E8
- » 3/8 Standard Sockets 6 - 22mm
- » 1/2 Standard Sockets 8 - 32mm
- » 1/2 Torx Sockets E10-E20
- » Ring & Open End Wrenches 6 - 24mm
- » Flare Nut Wrenches 8-19mm
- » Hex Keys H1.5 - H10
- » Phillips, Slot, Torx, Hex, Pozi - Bits
- » Phillips Screwdrivers Ph1 & Ph2 + Slotted Screwdrivers
- » Spark Plug Sockets
- » 1/4 & 1/2 Standard Ratchets + 3/8 Flexi Head Ratchet
- » Accessories - Pliers, Hammer, Adapter, L, Handle, Tape Measure Etc,
- » Extensions Standard, Flexi.
- » 1/2 Flexible Handle



KTSC9543MR

\$568 incl gst

\$493.91
excl

KING TONY 1/4 - 1/2 SET 87 PCE

CONTAINS:

- » 1/4 Standard Sockets - 5-13mm
- » 1/4 Deep Sockets 7 - 13mm
- » 1/2 Standard Sockets 10 - 32mm
- » Ring & Open End Wrenches 6 - 22mm
- » Spark Plug Sockets
- » Hex Key Set - H2.5 - H10
- » Star L - Wrench Set - T10h - T40h
- » Bits - Hex, Torx, Spline
- » Phillips & Slotted Screwdrivers
- » Spark Plug Sockets
- » 1/4 & 1/2 Standard Ratchets + 3/8 Flexi Head Ratchet
- » Accessories - Pliers, Extensions, Adaptor, Universals
- » 1/2 Flexible Handle & 1/4 Sliding T Handle
- » Other Bar Accessories - 9980410, 19980016



KT7587MRC01

\$386.07 incl gst

\$335.71
excl

KING TONY 1/4 - 1/2 SET 110 PCE

CONTAINS:

- » 1/4 Standard Sockets - 5 -14mm
- » 1/4 Deep Sockets 5 -14mm
- » 1/4 Torx Socket E4 - E8
- » 1/2 Standard Sockets 8 - 30mm
- » 1/2 Deep Sockets 14-22mm
- » Hex Keys 1.5 - 10mm
- » Ring & Open End Wrenches 8-19mm
- » Hex Keys H1.5 - H10
- » Bits - Phillips, Slot, Torx, Hex, Pozi, Spline
- » Phillips Screwdrivers Ph1 & Ph2 + Slotted Screwdrivers
- » Spark Plug Sockets
- » 1/2 Standard Ratchet & 1/4 Stubby Ratchet
- » Accessories - Pliers, Hammer, Adapter, Spinner Handle, Hammer, Circuit Tester Etc
- » Extensions Standard
- » 1/2 & 1/4 Flexible Handles
- » Led Pocket Torch



KT7510MRC

\$533.06 incl gst

\$463.53
excl

KING TONY 1/4 - 1/2 SET 77 PCE (6PT)

CONTAINS:

- » 1/4 Standard Sockets, 4 - 12mm
- » 1/4 Deep Sockets 8 - 13mm
- » 1/2 Standard Sockets 12 - 32mm
- » Spark Plug Sockets
- » Hex Keys
- » Ring & Open End Wrenches 8 - 19mm
- » Phillips & Slotted Screwdrivers
- » Phillips, Slot, Torx, Hex Bits
- » 1/4 & 1/2 Standard Ratchets
- » Spark Plug Sockets
- » Accessories - Pliers, Hammer, Adapter, Universal, T Bar, Etc
- » Extensions Standard, Flexi



KT7577MRC

\$323.33 incl gst

\$281.16
excl

KING TONY SOCKET & WRENCH TOOL SET 96 PCE IN CASE



CONTAINS:

- » 1/4" Drive Standard Socket 4 - 14mm
- » 1/4" Drive Deep Socket 6 - 14mm
- » 1/2" Drive Standard 10 - 32mm
- » 1/2" Drive Impact Socket 15 - 24mm

- » Open-Ring Wrench 8 - 19mm
- » Bit Hex 3 - 14mm, Bit Torx 10 - 60mm
- » Philips, Slotted, Tr Torx & Square-Robinson
- » Reversible Ratchet & Spinner Driver
- » Portable High Density Polythene Case

KTSC7396MR

\$235.95 incl gst

\$205.17
excl

KING TONY 62 PCE 3 SCT FOLD UP TOOL CHEST SET

CONTAINS:

- » KT87402 - 3 Section Portable Tool Box
- » KT9-4116FR - 6 PCE 1/2" Drive Socket Accessories
- » KT9-1217MR - 7 PCE Wrenches
- » KT9-90120MR - 20 PCE Wrenches & Hex Key Set
- » KT9-30206MR - 6 PCE Screwdrivers
- » KT9-4319MR - 19 PCE 1/2" Drive Socket Set
- » KT9-40203GP - 3 PCE Pliers



KTSC9A05-062MR

\$602.96 incl gst

\$524.31
excl



KING TONY

DELUXE KIT

KING TONY 237 PCE TOOL SET (METRIC) 4 DRAW TOOL BOX + 7 DRAW ROLL CAB-SA



- » KING TONY 237 PCE TOOL SET (METRIC) 4 DRW T/BOX + 7 DRW R/CAB-SA
- » 1/4" Drive 4 - 13mm, Std+Deep Socket
- » 3/8" Drive 8 - 22mm, Std+Deep Socket, Spark Plug: 14, 16, 21, Hex 3 - 12, Torx 10 - 50 Bit Socket
- » 1/2" Drive 10-32mm, Std Socket
- » Ring & Open End Wrench: 6 - 27mm, Stubby 10 - 19mm
- » Adjustable Wrench: 6", 8"
- » Pliers: Combination, Diagonal Cutting, Long Nose, Groove Joint, Internal Ring, External Ring, Locking
- » Screwdrivers: Phillips Tip, Slotted Tip, Square Tip
- » Pozidriv Tip, Hex Tip, Torx Tip, Torx Tr Tip, Adapter, Magnetic Holder
- » Hex Keys: 1.5 - 10mm, 3/32-3/8", T10h - T40h
- » Ball Pein Hammer, Chisel, Punch, Feeler Gauge
- » 5 Drawer Extra Deep Tool Box (724 x 470 x 446mm)
- » Color-Signs Eva Foam

KT919-237MRV-SA

\$2735.56 excl

\$3145.89 incl gst

BONUS ERGODYNE PACK

ERGODYNE BANDANA COOLING EVAP BLUE, SQUINCHER (50 X 3GRAM) QWIK STIKS LEMON LIME (PKT), ERGODYNE PROFLEX 230LTR LEATHER KNEE PADS WIDE SOFT CAP BROWN



FREE

BONUS ITEM RRP \$269.00

KING TONY 8 PCE 1/2 DRIVE IMPACT HEX BIT SKT SET



8 PCE 1/2"DRIVE STANDARD HEX BIT IMPACT SOCKET SET
60MM LONG SOCKETS METAL CASE SIZE: 270 X 73 X 46MM

CONTAINS:

- » KT4055M SERIES - 1/2" Drive Standard Hex Bit Impact Sockets: H5, H6, H8, H10, H12, H14, H17, H19

KT4418MP

\$77.51 excl

\$89.14 incl gst

KING TONY ADJUSTABLE TORQUE WRENCH SET



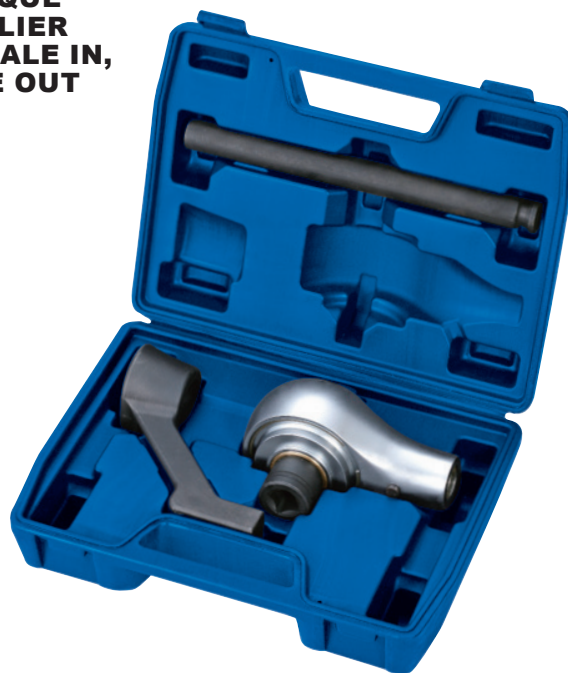
- » 10 PC. 1/2"DR. Standard Socket 13-24mm
- » 1 PC. 34423-1A Torque Wrench
- » 1 PC. 1/2"DR. Extension Bar

KT344251A12MR

\$189.97 excl

\$218.50 incl gst

KING TONY 5:1 TORQUE MULTIPLIER 3/4" FEMALE IN, 1" MALE OUT



- » Torque Manipulation With 5:1, Accuracy Guaranteed Better Than +/-5%
- » Reaction Bar Supplied In Two Styles For Maximum Versatility
- » Ideal Construction Offers Minimal Maintenance & Has An Extended Life
- » Portable Package Bring Convenience For Use In Different Working Places & Environments

KT34688

\$707.14 excl

\$813.21 incl gst

KING TONY 1/2" DRIVE IMPACT SOCKET SET 14 PCE 10-27MM 6PT



- » 14 PCE 1/2" Drive, 6pt Impact Socket Set
- » 14 PCE, 1/2" Drive Impact Socket Set
- » 6 Points, Standard Length
- » 10-27mm

KT4414MP

\$74.47
excl

\$85.64 incl gst

KING TONY 1/2" DRIVE SOCKET SET 8 PCE 10-24MM



- » KT4535M SERIES 1/2" Drive 6pt Standard Impact Sockets: 10, 12, 13, 14, 17, 19, 21, 24mm
- » Metal Case Size: 270 x 73 x 46mm

KT4408MP

\$47.14
excl

\$54.21 incl gst

KING TONY 1/2" DRIVE 8 PCE DEEP IMPACT SOCKET SET 12-24MM



- 1/2" DRIVE 8 PCE DEEP IMPACT SOCKET SET. METAL CASE SIZE: 246 X 103 X 38MM

- » KT4435M SERIES - 1/2" Drive 6pt Deep Impact Sockets: 12 - 24mm

KT4410MP01

\$77.51
excl

\$89.13 incl gst

KING TONY 3/4 DRIVE DP IMPACT SOCKET SET 8 PCE



- » KT6435M SERIES - 3/4" Drive 6pt Deep Impact Sockets: 26-38mm
- » Metal Case Size: 445 x 100 x 65mm

KT6410MP

\$153.71
excl

\$176.77 incl gst

KING TONY 1/2" DRIVE IMPACT DEEP SOCKET SET 25 PCE WITH CASE



- KT4435M SERIES - Sockets 8, 9, 10, 11, 12, 13, 14, 15, 16, 17, 18, 19, 20, 21, 22, 23, 24, 25, 26, 27, 28, 29, 30, 32, 36mm

KT4435MP

\$230.71
excl

\$265.32 incl gst

KING TONY 1" DRIVE 8 PCE DEEP IMPACT SET MET



- 8PCE 1" DRIVE IMPACT SOCKET SET. METAL CASE SIZE: 445 X 100 X 65MM.

CONTAINS:

- » KT8435M SERIES - 1" Drive 6pt Deep Impact Sockets: 24 - 41mm

KT8409MP

\$357.14
excl

\$410.71 incl gst

KING TONY 1/2" DRIVE TORQUE WRENCH 50-250FT.LB/NM



- » Quality Accords To DIM ISO 6789 & B107.14M-2004
- » Tolerance Of Torque +4%
- » 15 Degree Gear Action Degree (24 teeth)
- » Distinct Torque Scale
- » Adjust Screw
- » Recyclable Cylindrical Package
- » Torque Range: 50-250 ft. lb. (67.8-339.0Nm)
- » Increments: 2 ft. lb. (2.71 NM)
- » Overall Length: 570mm

KT34423-2C1

\$174.77
excl

\$200.99 incl gst

KING TONY 22 PCE 1/2" DRIVE SOCKET SET 12PT WITH EXTENDABLE POWER BAR



- » Complete Sizes Up To 34mm
- » Fix Nut Range M6-M22
- » Extendable Power Bar 450-600mm
- » Give Leverage To Break Stuck Nuts
- » STD 10, 11, 12, 13, 14, 15, 16, 17, 18, 19, 21, 22, 23, 24, 27, 30, 32, 34mm
- » Ext 125mm
- » U-Joint
- » Ratchet 250mm
- » Extendable Power Bar 450-600mm Into The Box
- » Metal Case Round Corner

KT4223MR01

\$235.71
excl

\$271.07 incl gst

KING TONY 55 PCE 3/8 DRIVE 12PT SOCKET SET METRIC & IMPERIAL

- » Complete Sizes Metric 6-22mm
- » Complete Sizes Imperial 1/4"-7/8"
- » Standard Socket, Deep Socket, Spark Sockets

- » STD 6, 7, 8, 9, 10, 11, 12, 13, 14, 15, 16, 17, 18, 19, 20, 21, 22mm
- » Deep 10, 11, 12, 13, 14, 15, 16, 17, 18, 19mm
- » Spark 16, 20.8mm
- » STD 1/4, 5/16, 3/8, 7/16, 1/2, 9/16, 5/8, 11/16, 3/4, 13/16, 7/8"
- » Deep 1/4, 5/16, 3/8, 7/16, 1/2, 9/16, 5/8, 11/16, 3/4"
- » Ext 75, 150, 250mm
- » U-Joint
- » Ratchet 200mm
- » Power Bar 250mm
- » Metal Case Round Corner

KT3055CR01

\$250.00
excl

\$287.50 incl gst



KING TONY

KING TONY 12 PCE STD S/WRENCH SET 8-24MM TET POUCH

12 PCE STANDARD
RING AND OPEN
END SPEED
WRENCH SET IN
POUCH

CONTAINS:

- » KT3731M SERIES
Standard Ring And
Open End Speed
Wrenches: 8, 9, 10,
11, 12, 13, 14, 15,
17, 19, 22, 24mm



KT12112MRN

\$273.56
excl

\$314.59 incl gst

BONUS KT1211MRN KING TONY 11 PCE R/OE WRENCH SET TET POUCH 8-24MM

CONTAINS:

- » KT1060 SERIES -
Combination Wrenches:
8, 9, 10, 11, 12, 13, 14, 17,
19, 22, 24mm



FREE

BONUS ITEM RRP \$212

KING TONY 14 PCE R/OE WRENCH SET 10-32MM



14 PCE - COMBINATION (RING AND OPEN END)
WRENCH SET IN POUCH.

CONTAINS:

- » KT1060 SERIES - Combination Wrenches:
» 10, 11, 12, 13, 14, 16, 17, 19, 21, 22, 24, 27, 30, 32mm

KT1214MR

\$196.04
excl

\$225.45 incl gst

KING TONY 3/4" DRIVE TELESCOPIC LEVER WITH REVERSIBLE RATCHET



KT6482-24G

\$207.66
excl

\$238.81 incl gst

6482-24G 3/4"DR.
TELESCOPIC LEVER WITH
REVERSIBLE RATCHET

KING TONY 18 PCE R/OE WRENCH SET TET POUCH 6-24MM

18 PCE COMBINATION
(RING AND OPEN END)
WRENCH SET IN POUCH.

CONTAINS:

- » KT1060 SERIES
Combination Wrenches:
6, 7, 8, 9, 10, 11, 12, 13,
14, 15, 16, 17, 18, 19, 20,
21, 22, 24mm



BONUS KT1282MR KING TONY STUBBY R/OE WRENCH SET 8-19M

12PCE - STUBBY COMBINATION
(RING AND OPEN END) WRENCH
SET IN POUCH. CONTAINS:

- » KT10D0 SERIES - Stubby
Combination Wrenches:
8, 9, 10, 11, 12, 13, 14, 15, 16, 17,
18, 19mm



KT1218MRN

\$187.77
excl

\$215.94 incl gst

FREE

BONUS ITEM RRP \$160.06

SPANNERS & SOCKET SETS

KING TONY 48 PCE 1/4" DRIVE MET/ SOCKET SET

CONTAINS:

- » 1/4" Drive 6Pt Standard Sockets - 4-13mm & 5/32-1/2"
- » 1/4" Drive 6Pt Deep Sockets - 5/32-1/2"
- » 1/4" Drive Reversible Ratchet
- » 1/4" Drive Flexible Handle
- » 1/4" Drive Extension Bars x2
- » 1/4" Drive Universal Joint



KT2549CR01

\$185.71 excl

\$213.57 incl gst

BONUS KT1032CQ01 33 PCE SCREWDRIVER BIT SET- 25MM LONG

CONTAINS:

- » KT1025S SERIES - Slotted Screwdriver Bits: 3, 4, 5, 6mm
- » KT1025P SERIES - Phillips Screwdriver Bits: PH1, PH2 x 2, PH3
- » KT1025Z SERIES - Pozi Screwdriver Bits: PZ1, PZ2 x 2, PZ3
- » KT1025T SERIES - Torx Screwdriver Bits: T10, T15, T20, T25, 527, T30, T40
- » KT1025H SERIES - Hex Screwdriver Bits: 3, 4, 5, 6mm
- » KT1025U SERIES - Tamper Resistant Torx Screwdriver Bits: T10H, T15H, T20H, T25H, T27H, T30H, T40H
- » KT102502R - Square Head Screwdriver Bit No. 2
- » KT7702-25 - Bit Adaptor
- » KT753-63 - Magnetic Bit Holder
- » Plastic Case Size: 120 X 70 X 42mm



FREE

BONUS ITEM RRP \$66.67

KING TONY 26 PCE R/OE WRENCH SET TET POUCH 6-32MM

CONTAINS:

- » KT1060 SERIES Combination Wrenches: 6, 7, 8, 9, 10, 11, 12, 13, 14, 15, 16, 17, 18, 19, 20, 21, 22, 23, 24, 25, 26, 27, 28, 29, 30, 32mm



KT1226MRN

\$364.74 excl

\$419.45 incl gst

BONUS KT3036CR01 36 PCE 3/8" DRIVE 12PT STANDARD & DEEP SOCKET SET

METAL CASE SIZE: 372 X 153 X 40MM

CONTAINS:

- » KT3330M SERIES - 3/8" Drive 12pt Standard Sockets: 6-22mm
- » KT3330S SERIES - 3/8" Drive 12pt Standard Sockets: 1/4-7/8"
- » KT3769-08F - 3/8" Drive Reversible Ratchet
- » KT3571-08 - 3/8" Drive Sliding T-Handle
- » KT3452-08F - 3/8" Drive Flexible Handle
- » KT3792 - 3/8" Drive Universal Joint
- » KT3221 SERIES - 3/8" Drive Extension Bars: 3 & 6"



FREE

BONUS ITEM RRP \$312.70

KING TONY 36 PCE 3/8" DRIVE 12PT COMB SOCKET SET

36 PCE 3/8" DRIVE 12PT STANDARD & DEEP SOCKET SET.
METAL CASE SIZE: 372 X 153 X 40MM.

CONTAINS:

- » KT3330M SERIES - 3/8" Drive 12pt Standard Sockets: 6-22mm
- » KT3330S SERIES - 3/8" Drive 12pt Standard Sockets: 1/4-7/8"
- » KT3769-08F - 3/8" Drive Reversible Ratchet
- » KT3571-08 - 3/8" Drive Sliding T-Handle
- » KT3452-08F - 3/8" Drive Flexible Handle
- » KT3792 - 3/8" Drive Universal Joint
- » KT3221 SERIES - 3/8" Drive Extension Bars: 3 & 6"



BONUS KT2525MRE 25 PCE 1/4" DRIVE 6PT STANDARD SOCKET & BIT SET

PLASTIC CASE SIZE: 203MM X 93MM X 43MM

CONTAINS:

- » KT2335M SERIES - 1/4" Drive 6Pt Standard Sockets - 4-13mm
- » KT1025P SERIES - Phillips Bit - PH2
- » KT1025H SERIES - 2X Hex Bits - 5 + 6mm
- » KT1025T SERIES - 6X Torx Bits - T10-T40
- » KT2771 SERIES - 1/4" Drive Reversible Ratchet
- » KT2221 SERIES - 1/4" Drive Extension Bar - 4"
- » KT2142 - 1/4" Drive Bit Holder



KT3036CR01

\$178.69 excl

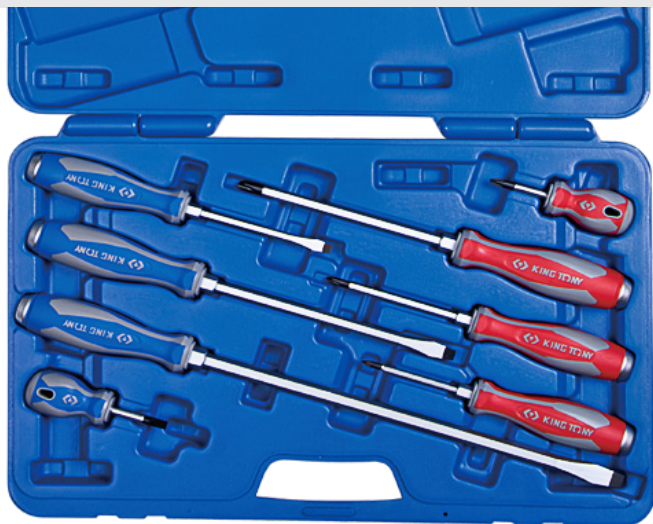
\$205.49 incl gst

FREE

BONUS ITEM RRP \$131.44



KING TONY



KING TONY 8 PCE GO THRU SCREWDRIVER SET

8PCE GO THRU SCREWDRIVER SET

CONTAINS:

- » KT1461 SERIES: PH1 x 75, PH2 x 100, PH3 x 150
- » KT1462 SERIES: 6.5 x 100, 8.0 x 175, 10 x 300
- » KT1421 SERIES: PH2 x 38
- » KT1422 SERIES: 6.5 x 38



BONUS KT1032CQ01 KING TONY BIT SET + NO.2 SQUARE BIT 33 PCE

CONTAINS:

- » KT1025S SERIES - Slotted Screwdriver Bits: 3, 4, 5, 6mm
- » KT1025P SERIES - Phillips Screwdriver Bits: PH1, PH2 x 2, PH3
- » KT1025Z SERIES - Pozi Screwdriver Bits: PZ1, PZ2 x 2, PZ3
- » KT1025T SERIES - Torx Screwdriver Bits: T10, T15, T20, T25, 527, T30, T40
- » KT1025H SERIES - Hex Screwdriver Bits: 3, 4, 5, 6mm
- » KT1025U SERIES - Tamper resistant torx screwdriver bits: T10H, T15H, T20H, T25H, T27H, T30H, T40H
- » KT102502R - Square Head Screwdriver Bit No. 2
- » KT7702-25 - Bit Adaptor
- » KT753-63 - Magnetic Bit Holder
- » Plastic case size: 120 x 70 x 42mm

KT35208MR

\$112.86
excl

\$129.79 incl gst

FREE

BONUS ITEM RRP \$66.67



KING TONY 14 PCE SCREWDRIVER SET(WITH INSUL)

14 PCE - STANDARD & INSULATED SCREWDRIVER SET PHILLIPS & SLOTTED HEADS
CONTAINS:

- » KT1411 SERIES SCREWDRIVERS - Phillips: PH0 x 75, PH1 x 100, PH2 x 38, PH2 x 100, PH2 x 150, PH3 x 150
- » KT1412 SERIES SCREWDRIVERS - Slotted: 3 x 75, 4 x 100, 5.5 x 100, 6.5 x 38, 6.5 x 150, 8 x 200mm
- » KT1478 SERIES INSULATED SCREWDRIVER - Pozi: PZ2 x 100
- » KT1482 SERIES HEAVY DUTY SCREWDRIVER
Slotted: 10 x 300mm

KT35114MR01

\$77.51
excl

\$89.14 incl gst



KING TONY 10 PCE PUNCH SET

CONTAINS:

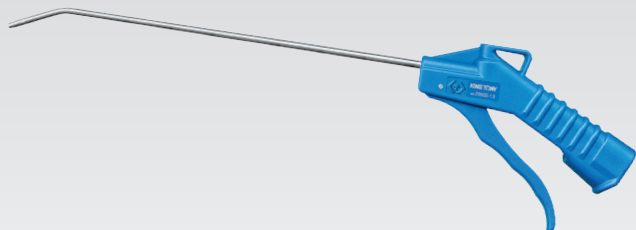
- » KT761 SERIES - Centre Punches: 3 x 100, 4 x 120, 5 x 150
- » KT763 SERIES - Starter Punches: 3 x 120, 6 x 120, 8 x 120
- » KT764 SERIES Pin Punches: 3 x 40, 4 x 50, 5 x 50, 6 x 50

KT1010PR

\$62.31
excl

\$71.66 incl gst

KING TONY 330MM AIR BLOW GUN (BSPT AIR INLET)



- » Ideal For Cleaning
- » Steel Nozzle & Nylon Fibre Handle
- » Air Pressure: 90 Psi Recommended
- » Air Inlet: BSPT
- » Overall Length: 472mm

KT79900-13

\$15.20
excl

\$17.48 incl gst

KING TONY 100MM AIR BLOW GUN (BSPT AIR INLET)



- » Ideal For Cleaning
- » Steel Nozzle & Nylon Fibre Handle
- » Air Pressure: 90 PSI Recommended
- » Air inlet: BSPT
- » Overall Length: 242mm

KT79900-04

\$11.40
excl

\$13.11 incl gst

KING TONY GROOVE JOINT PLIERS (LONG HAND)

- » Material: PVC
- » 7 Positions Opening



253MM

KT6511-10C

\$28.57
excl

\$32.86 incl gst

325MM

KT6511-13C

\$31.43
excl

\$36.14 incl gst

425MM

KT6511-17C

\$50.00
excl

\$57.50 incl gst



KING TONY 4 PCE JUMBO PRY BAR SET

- » Pry Bar Set In Plastic Carry Case
- Contains:
 - » KT9TK225A, 25-625mm - 90°
 - » KT9TK225B, 25-625mm - 45°
 - » KT9TK236A, 36-920mm - 30°
 - » KT9TK236B, 36-920mm - Straight

KT9TK024

\$235.71
excl

\$271.07 incl gst

KING TONY LOCK GRIP PLIER CURVED CHROME

MATERIAL: CHROME
MOLYBDENUM ALLOY
STEEL

- » Curved Jaw With Wire Cutter
- » With Adjusting Screw And Release Lever
- » Jaw Width: 10mm, Length: 30mm



CURVED 5"

- » Overall length: 140mm (5.1/2")
- » Jaw Capacity: 29mm

KT6011-05R

\$15.00
excl

\$17.25 incl gst

CURVED 7"

- » Overall Length: 185mm (7")
- » Jaw Capacity: 38mm

KT6011-07R

\$16.72
excl

\$19.22 incl gst

CURVED 10"

- » Overall Length: 225mm (10")
- » Jaw Capacity: 48mm

KT6011-10R

\$19.29
excl

\$22.318 incl gst

KING TONY THREE PCE PLIER SET



- » 3 PCE Pliers Set, All 8"
- » Grip Provides Comfort
- » Fit For Purpose
- » Sharp Cutting Edge
- » Pliers Of Long Nose, Side Cut & Combination
- » 6231-08
- » 6311-08
- » 6111-08

KT42213GP01

\$72.95
excl

\$83.89 incl gst

KING TONY LOCK GRIP PLIER - LONG NOSE 6"



- » Chrome Molybdenum Alloy Steel
- » ASME B107.24
- » Overall Length: 165mm (6")
- » Jaw Capacity: 51mm

LONG NOSE 6"

KT6315-06

\$17.89
excl

\$20.54 incl gst

- » Chrome Molybdenum Alloy Steel
- » ASME B107.24
- » Overall Length: 221mm (9")
- » Jaw Capacity: 70mm

LONG NOSE 9"

KT6315-09

\$19.29
excl

\$22.18 incl gst

KING TONY LOCK GRIP PLIER STRAIGHT CHROME

LOCK GRIP PLIER

- » Material: Chrome Molybdenum Alloy Steel
- » Straight Jaw
- » With Adjusting Screw & Release Lever
- » Jaw Width: 10mm, Length: 30mm
- » ASME B107.24
- » Finishing: Chrome Plated



7" CHROME

- » Overall Length: 185mm (7")
- » Jaw Capacity: 38mm

KT6031-07R

\$17.29
excl

\$19.88 incl gst

10" CHROME

- » Overall Length: 225mm (9")
- » Jaw Capacity: 48mm

KT6031-10R

\$20.00
excl

\$23.00 incl gst

KING TONY COMPACT BOLT CUTTER 8" / 200MM

- » Compact Bolt Cutter 200mm
- » High Leverage Design For Easier To Cut Nails, Bolt, Steel, Fencing
- » Compact Light-Weight & Ergo Grip Handles
- » Chrome Molybdenum With 62HRC Cutting Jaws
- » Cut Up To 30Hrc Harden
- » Material 4mm
- » Cut Iron Nails Up To 20D
- » Maximum Jaw Opening 8mm



KT6133-08

\$58.77
excl

\$67.59 incl gst



KING TONY

KT911-225CR

\$1495.00
excl

\$1719.25 incl gst

KING TONY 225 PCE TOOL SET IN 6 DRAWER BOX

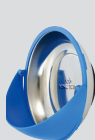
- » Metric / Imperial 1/4" Drive Std & Deep Socket Set: 4-13mm & 5/32-1/2"
- » Metric / Imperial 3/8" Drive Std & Deep Socket Set: 6-22mm & 3/8-13/16"
- » Metric / Imperial 1/2" Drive Standard Socket Set: 10-32mm & 3/8-1 1/4"
- » Spark Socket 3/8" Drive 14, 16, 20.5mm
- » Ring & Open End Wrenches 6-21mm & 15/16-3/4"
- » Adjustable Wrenches 200mm
- » Internal & External Circlip Pliers Set
- » Lock Grip & Groove Joint Pliers Set
- » Combination, Long Nose & Diagonal Cutting Pliers Set
- » Hex Key Sets 2.5-10mm & 3/32-3/8"
- » Bit Set (TORX, PZ, PH, SL including RB2 Square Drive)
- » Screwdrivers Set PH 0, 1, 2, 3 & SL 3, 6, 8
- » Ball Pein Hammer 16Oz
- » Industry Snip & Utility Knife & Half Round File & Measuring Tape 8M
- » Magnetic Tray For Screws
- » 6 Drawer Tool Box



FREE

BONUS ITEM RRP \$205.35

**BONUS ERGODYNE 18232
PROFLEX 230LTR
LEATHER KNEE PADS
WIDE SOFT CAP BROWN,
SQWINCHER (50 X
3GRAM) QWIK STIKS
GRAPE**



CONTAINS:

TERMS AND CONDITIONS

KING TONY TOOLS ARE WARRANTED AGAINST FAULTY MATERIALS AND MANUFACTURE: All advertised items were available at date of publication from the King Tony master agent Fox & Gunn Ltd, Private Bag 94304, Pakuranga, Auckland. The distributor on this publication is an independent distributor who may not have all items available. Fox & Gunn Ltd will endeavour to maintain item availability during the promotional period. Where a product is out of stock there will be no rain checks on the supply of that product or the advertised pricing on that product outside of the promotional dates. If a normal price is shown, this is the national recommended end user price. Actual pricing varies from distributor to distributor. Ratchet style in socket sets may differ from that illustrated. All sizes are approximate only. Accessories shown do not come with the item unless specifically listed in the specifications. The colours in this catalogue may vary slightly from the actual item. E&OE. © Copyright 2021. Reproduction of this publication in whole or in part is prohibited without written approval from Fox & Gunn Ltd.

ALL BONUS ITEMS AND FREE GIVE AWAY ITEMS are strictly while stock lasts and no rain checks may be taken. All King Tony NZ social media activity is at the discretion of Fox & Gunn Ltd. All bonus items are only applicable when purchased in conjunction with the primary offer.

KING TONY WORKSHOPS: All "pre-orders" will be held until minimum order quantity has been reached. In order for your customer to pre-order one of the two King Workshops we require the following:

1. A confirmed order number from your business based on one of the product codes listed in the flyer

2. A deposit of \$100.00 is required to secure the pre-order.

Estimated delivery of your order will be July 2022. Final pre-order cut-off date is strictly 20th December 2021

Although we reserve the right to cancel your order for the reasons below:

- Any reason which is beyond our reasonable control including; without being limited to; industrial action and or where the products cannot be manufactured because of shortage of materials, etc.
- The products have been destroyed or damaged before delivery to you.
- Significant shipping delays or failures by suppliers to manufacture the products to our required standards.

Should any of the above reasons occur we will notify you within 10 working days. Fox & Gunn Ltd shall not be liable to you or any other person for any loss or damages suffered due to a failure by us to perform our obligations.

Fox & Gunn Ltd reserve the right to close the pre-order process at any time and without notice due to orders meeting required MOQs.

JOIN US ON FACEBOOK AND INSTAGRAM



KINGTONYNEWZEALAND



KINGTONY_NZ